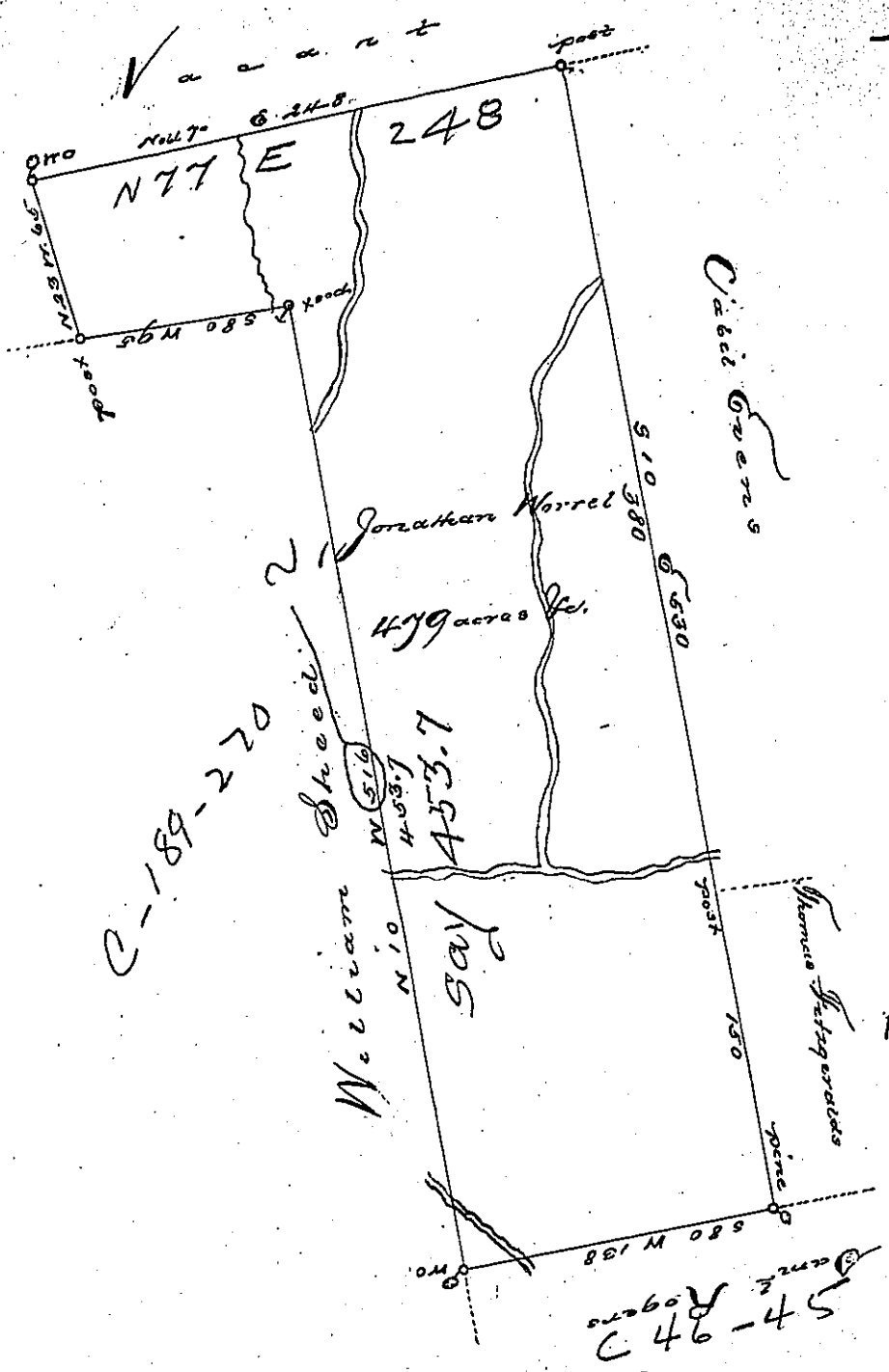


Sug. Loaf -  
Luzerne.  
W



Draught of a tract of Land Called                      Situate on Nescopeck and a part of Sugar Loaf  
 Run, joining Land Surv<sup>d</sup> for Caleb Evans & others in State Township Luzerne  
 (formerly Northumberland) County, Containing four hundred & seventy nine acres & allowance  
 of six up Cent for roads &c. Surv<sup>d</sup> for Jonathan Horrell the 11th day of April, 1787,  
 in Pursuance of a warrant Dated the 1st Day of July 1784  
 Wm. Gray, D.S.

To  
 John Likens, Esq<sup>r</sup>  
 Surv<sup>r</sup> Gen<sup>l</sup>

IN TESTIMONY that the above is a copy of the original remaining on file in the  
 Department of Internal Affairs of Pennsylvania, made con-  
 formably to an Act of Assembly approved the 16th day of  
 February, 1833, I have hereunto set my Hand and caused  
 the Seal of said Department to be affixed at Harrisburg, this  
 fourth day of January, 1898,  
 James W. Latta  
 Secretary of Internal Affairs.